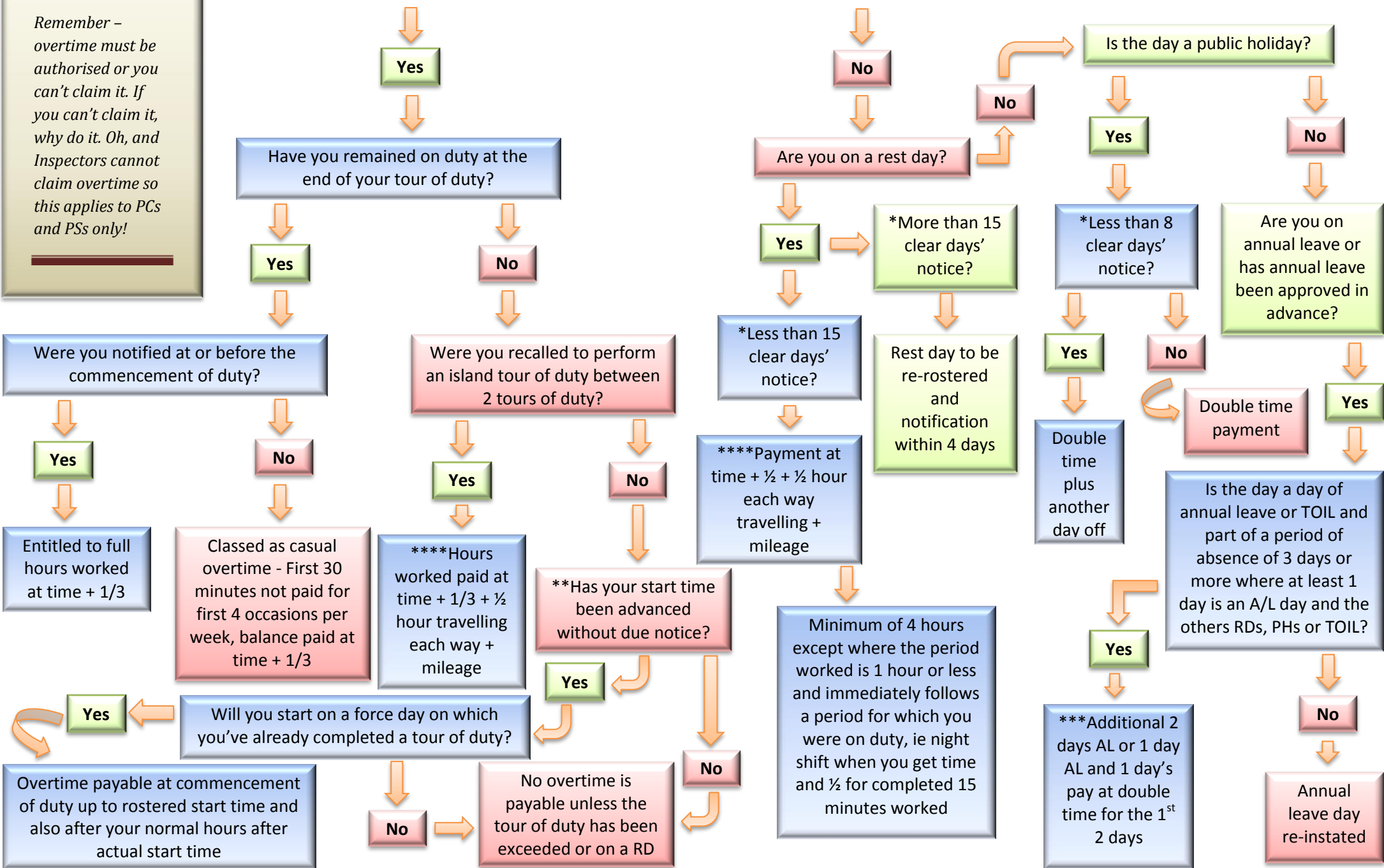
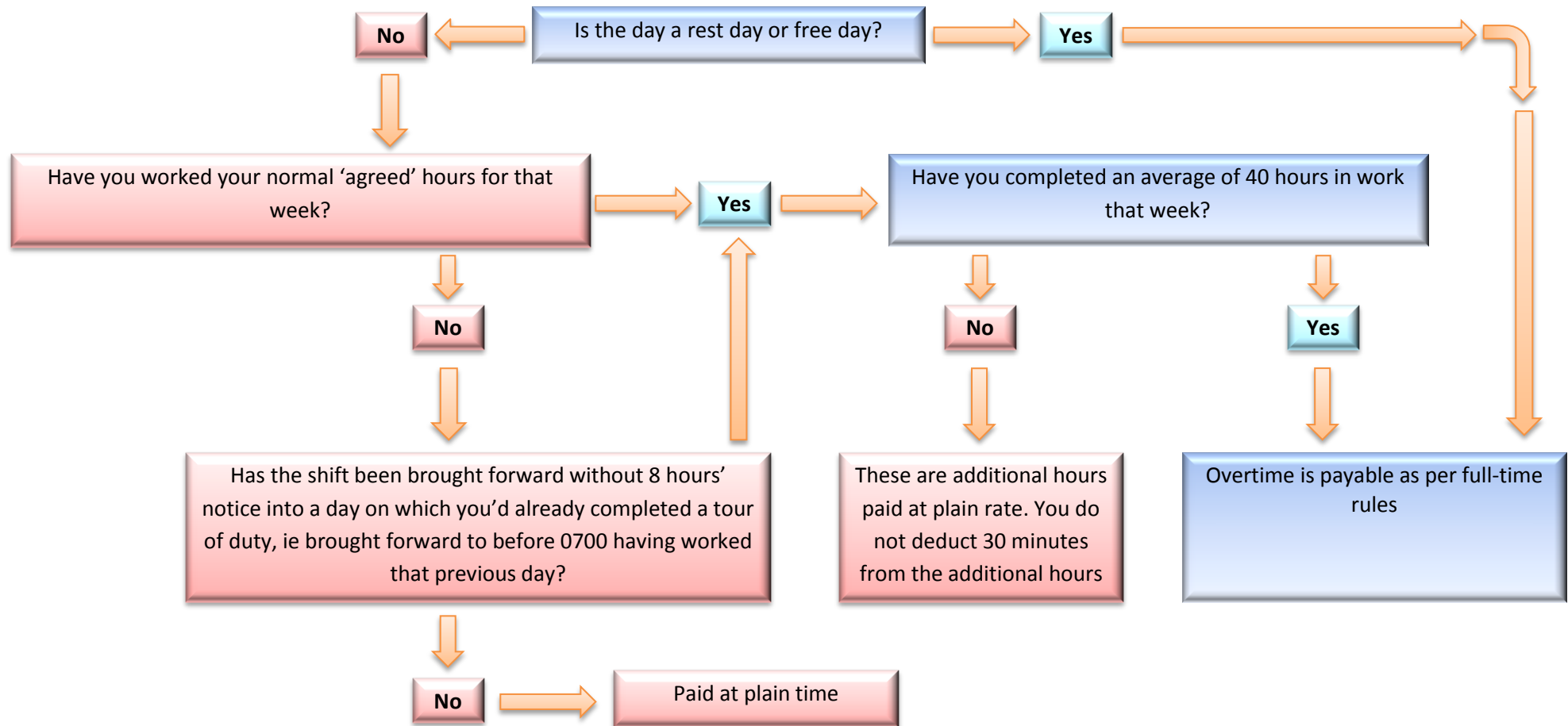


Remember – overtime must be authorised or you can't claim it. If you can't claim it, why do it. Oh, and Inspectors cannot claim overtime so this applies to PCs and PSs only!

Have you worked or are you scheduled to work a full tour of duty on this force day?



Part Time Workers Overtime and Additional Hours Entitlement



Asterix legend

*Clear days do not include the day on which you were warned or the day you had to work; ** Due notice is not less than 8 hours before the new start time; ***This applies to first 2 days AL only - after that it's a day and a half for each day or 1 day off and ½ day at double time. 1 day's pay is the number of hours you would have been rostered to work on that day;****Travelling time can only be claimed if the total claim is no more than 6 hours.